

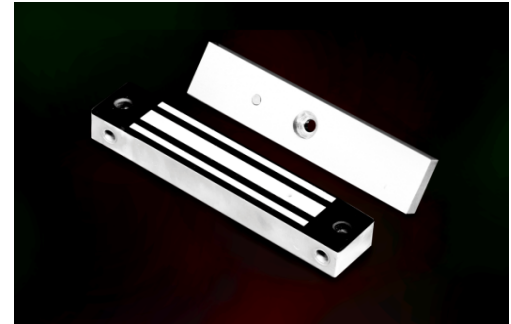
EXT Series

600lbs Water Proof Electromagnetic Lock

Model EXT275-SL-A (Monitored Version)

DESCRIPTION

600lbs Water Proof EM locks were designed as such to be unaffected / resisting the ingress of water under specified condition with its fully sealed electronics incased with stainless steel. Suitable for outdoor application and harsh climate.



FEATURES & SPECIFICATION



Life Safety Applications



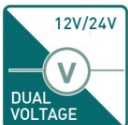
Zero Residual Magnetism



Low Energy Consumption



Cost Savings

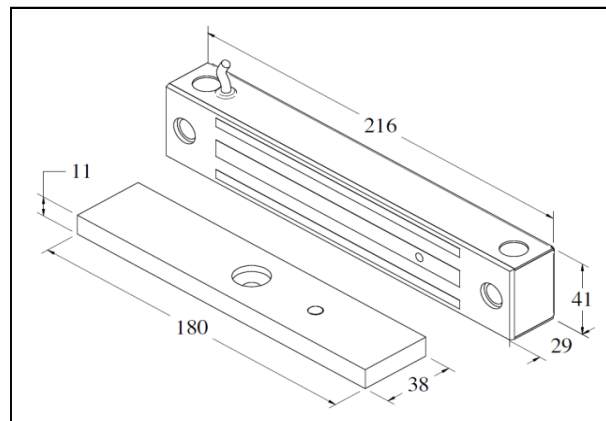


12/24Vdc Selectable



Fully Sealed Electronics

Model	EXT275-SL-A
Lock Status Monitoring	Reed Switch
Holding Force	Up to 600lbs
Magnet Size	216 X 41 X 29 mm
Armature Size	180 X 38 X 11 mm
Current Drain	480mA±10%/12Vdc 240mA±10%/24Vdc
Operating Temperature	(-10 to 55) °C (14 to 131) °F
Housing Finishing	Stainless Steel Housing
Est. Weight	2.31kg

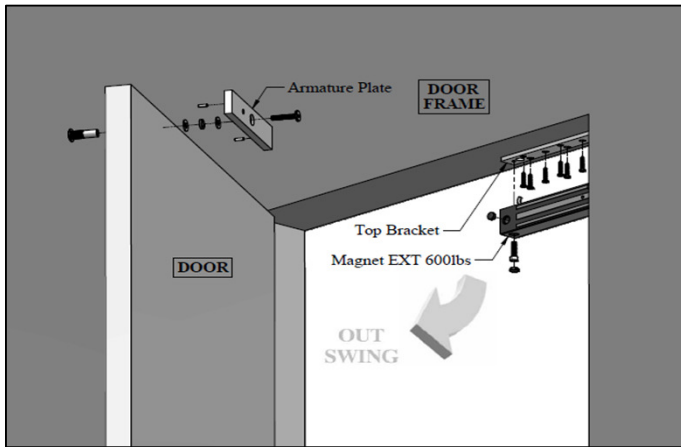


EXT Series



600lbs Water Proof Electromagnetic Lock

STANDARD INSTALLATION DIAGRAM



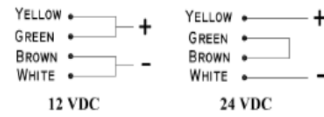
Explode View

WIRING DIAGRAM

Wiring Instruction Diagram EXT

WIRING INSTRUCTIONS

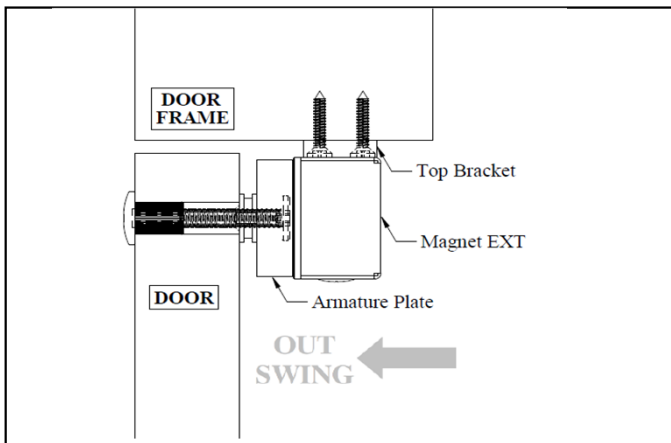
IMPORTANT!
Before the power supply is switched on,
set the wiring correctly.



12 VDC

24 VDC

REED SENSOR CONTACT



Side View

OPTIONAL - BRACKET SELECTION

LS-EXT275

Z-275