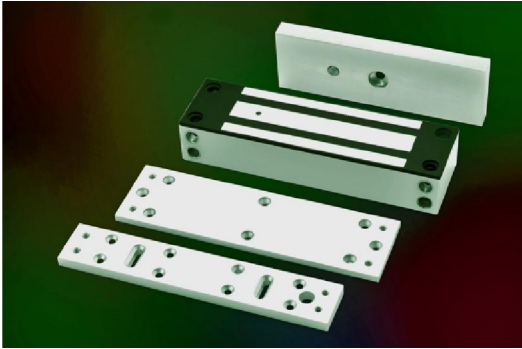


Electromagnetic Locks



EXT545-SL



1200lbs Water Proof EM locks were designed as such to be unaffected / resisting the ingress of water under specified condition with its fully sealed electronics incased with stainless steel. Suitable for outdoor application and harsh climate.

- ✓ Life Safety Applications
- ✓ No Residual
- ✓ Low Energy Consumption
- ✓ 12/24V Selectable
- ✓ Fully Sealed Electronics
- ✓ CE Compliance

Specifications

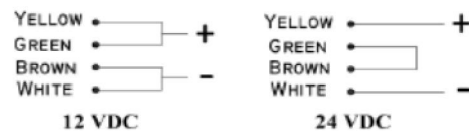
- Magnet Size: 222 x 62 x 42 mm
- Armature Size: 185 x 61 x 16.5 mm
- Holding Force: up to 1200lbs
- Current Drain: 420mA \pm 10%/12Vdc / 210mA \pm 10%/24Vdc
- Temperature: (-10 to 55) $^{\circ}$ C (14 to 131) $^{\circ}$ F
- Weight: 5.26kg

Wiring Instruction Diagram EXT

WIRING INSTRUCTIONS

IMPORTANT!

Before the power supply is switched on, set the wiring correctly.



REED SENSOR CONTACT



Ascendo Pte Ltd

85 Playfair Road, #06-02 Tong Yuan Industrial Building, Singapore 368000

Tel: 6741 1218 Fax: 6741 8991

Email: sales@ascendo.com.sg